

*The making of*  
**Oasis Valleys**



CHANOD, Gujarat, India



e jambu brahmin  
shanskrit pathshala

Shree Madhavanand  
Ashram  
श्री माधवानंद  
आश्रम

Chandod  
ચાણોદ

Hazrat Dada Pir

Chandod Narayan Bali  
ચાણોદ  
નારાયણ બલી

Chanod-Karnali  
Triveni Sangam

Narmada River

Gita Mandir, karnali

THE SITE

## DESIGN BRIEF



Surprise  
Realisation  
Point of View  
Awareness



Righteous  
Honesty  
Sustainability  
Embracing Reality



Free Will  
Playful  
Non-judgemental  
Responsibility

# 01

## FROM BROWN TO GREEN





7000 trees were planted in the 7 acres site to create an ecosystem of its own!



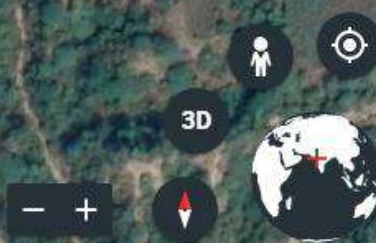




THE SITE

Google<sup>TM</sup>

Google DigitalGlobe Camera : 756 m 21°59'33"N 73°27'28"E 41 m 100%













## CHECK DAMS = MORE WATER = MORE GREEN



- Check Dams in the Ravines to capture water and create water storages for usage
- Cool wind breezing over these ponds keeps the whole campus cool during summer.
- Also the water body helps in creating habitat for the local animals.

## SEWAGE TREATMENT = MORE GREEN




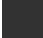


- Earthworms along with biologically degradable media works as a filter in the plant
- Treated water of the sewage treatment plant is used for Irrigation & agriculture in the campus
- The production of the crops, orchard & other plants has increased drastically due to higher composition of N-P-K as well micro nutrients.

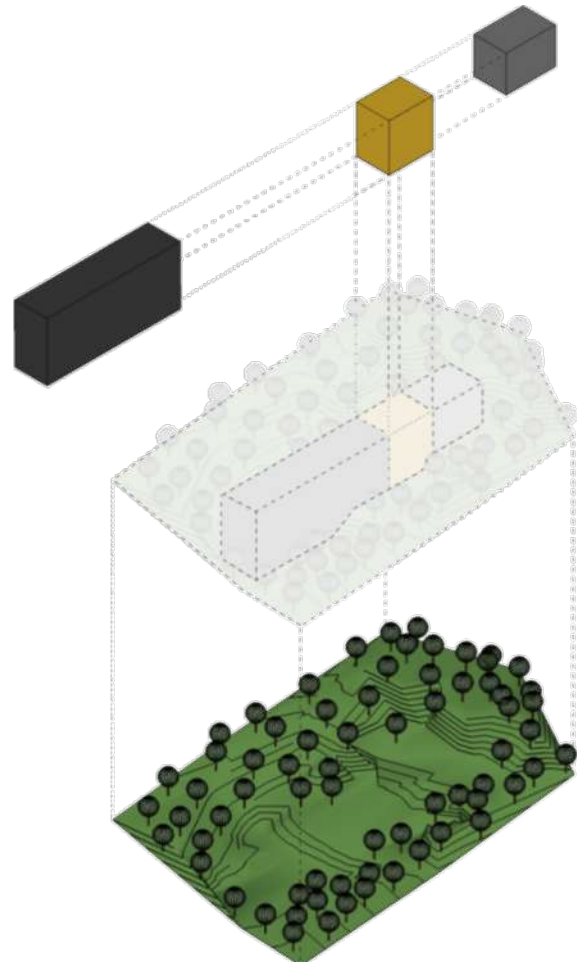
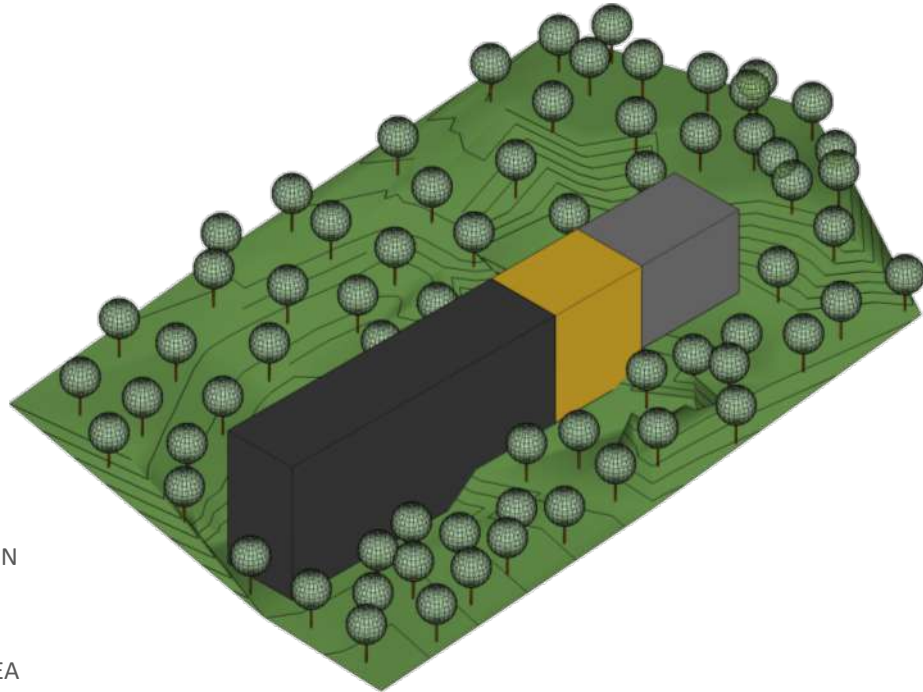


# 02

## MINIMUM IMPACT ON THE ENVIRONMENT

# Minimum Foot Print

-  SITE
-  ACCOMMODATION
-  CIRCULATIONS
-  WORKSHOPS AREA

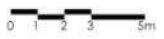




Minimum Disturbance to the Soil,  
and natural water flow



Site Plan





**ELEVATION**

Enhanced Climatic Performance because of the shade created by the trees on East and West





# 03

## PARADIGM SHIFT













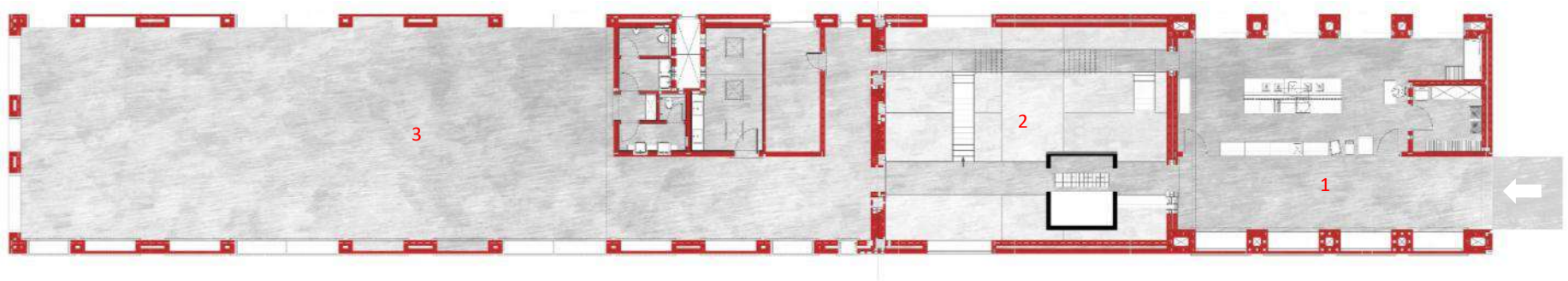
## SECTION

Entering a 5 Storey Building from the Top Floor and then descending down!









ENTRANCE FLOOR PLAN ( Level 1)

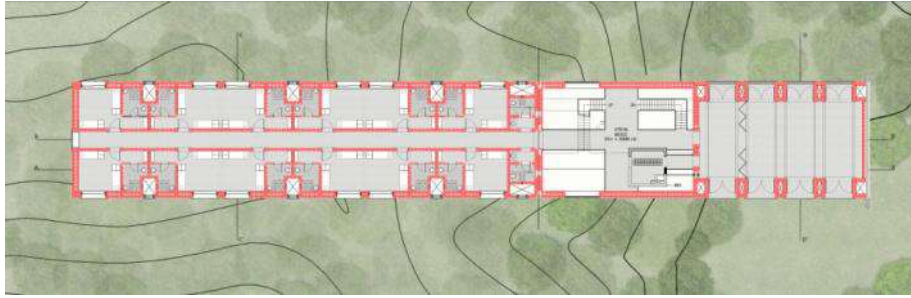
1. Kitchen
2. Atriums
3. Dinning
4. Multipurpose spaces







The institutes consists of 2 workshop halls, each with about 80 kids capacity, 12 guest rooms, dormitories for about 120 kids, and necessary cooking, dining and sanitation facilities.



Third Floor Plan ( Level 2 )



Second Floor Plan ( Level 3 )



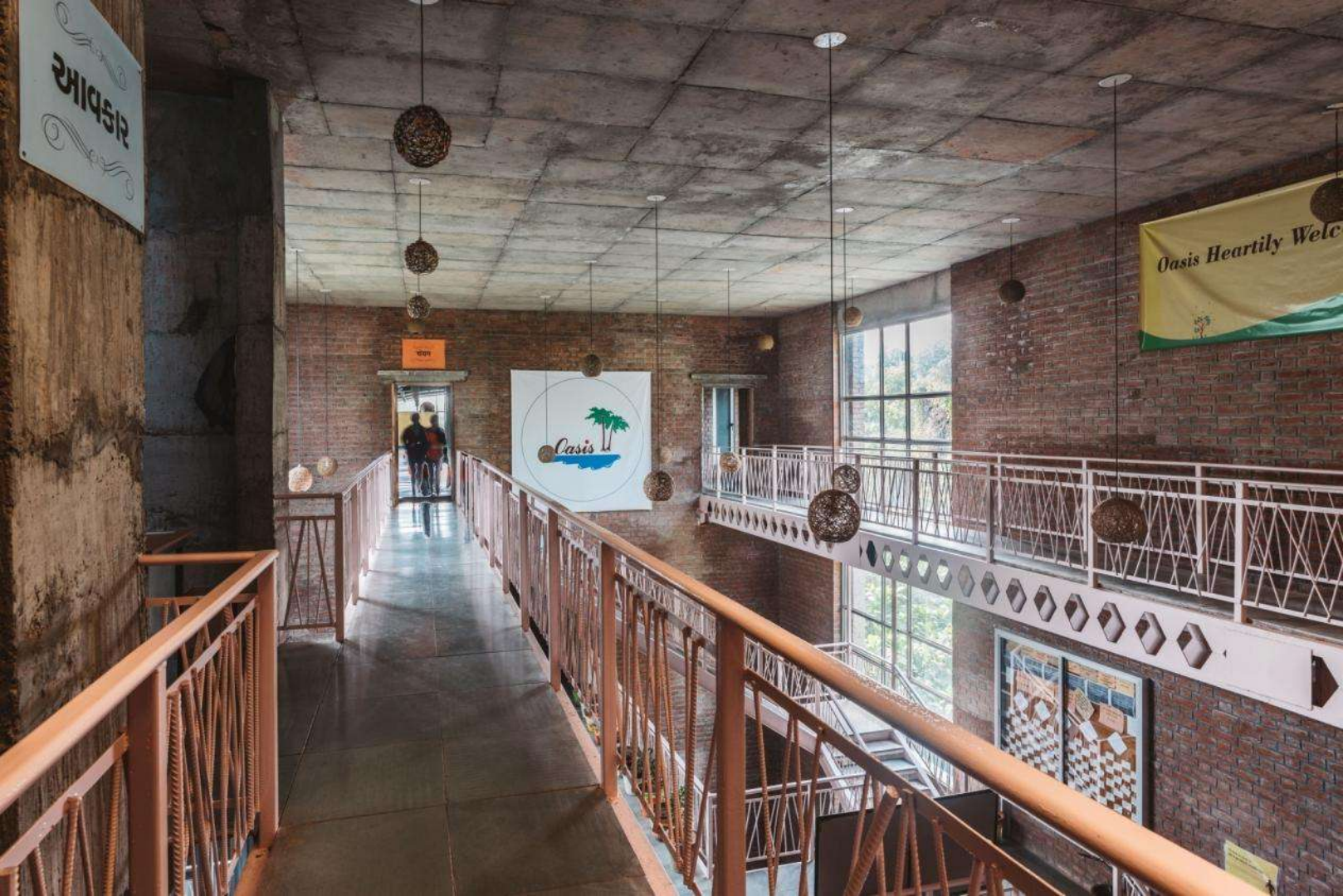
First Floor Plan ( Level 4 )



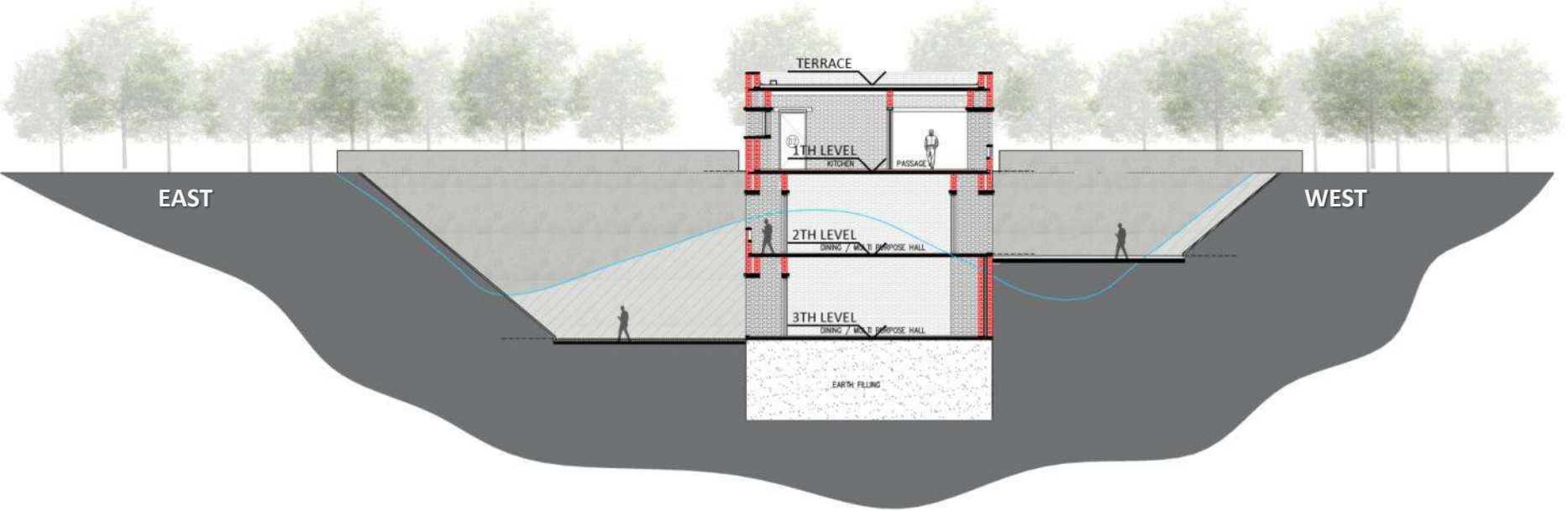
Ground Floor Plan ( Level 5 )

Enhanced Climatic Performance by use of Cavity Wall Construction in Clay Bricks

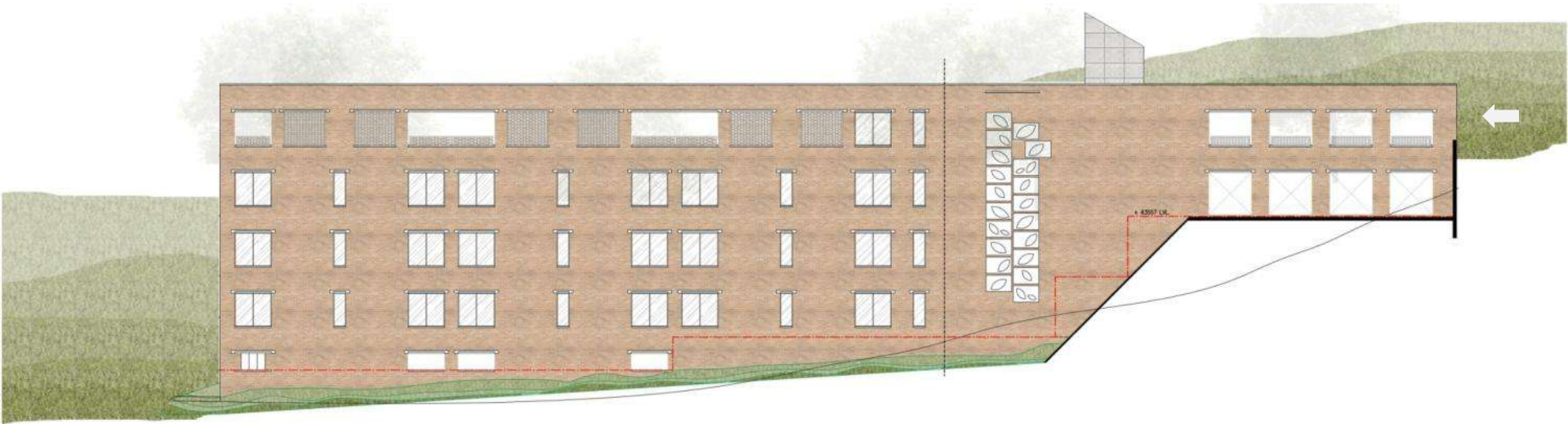




SECTIONS







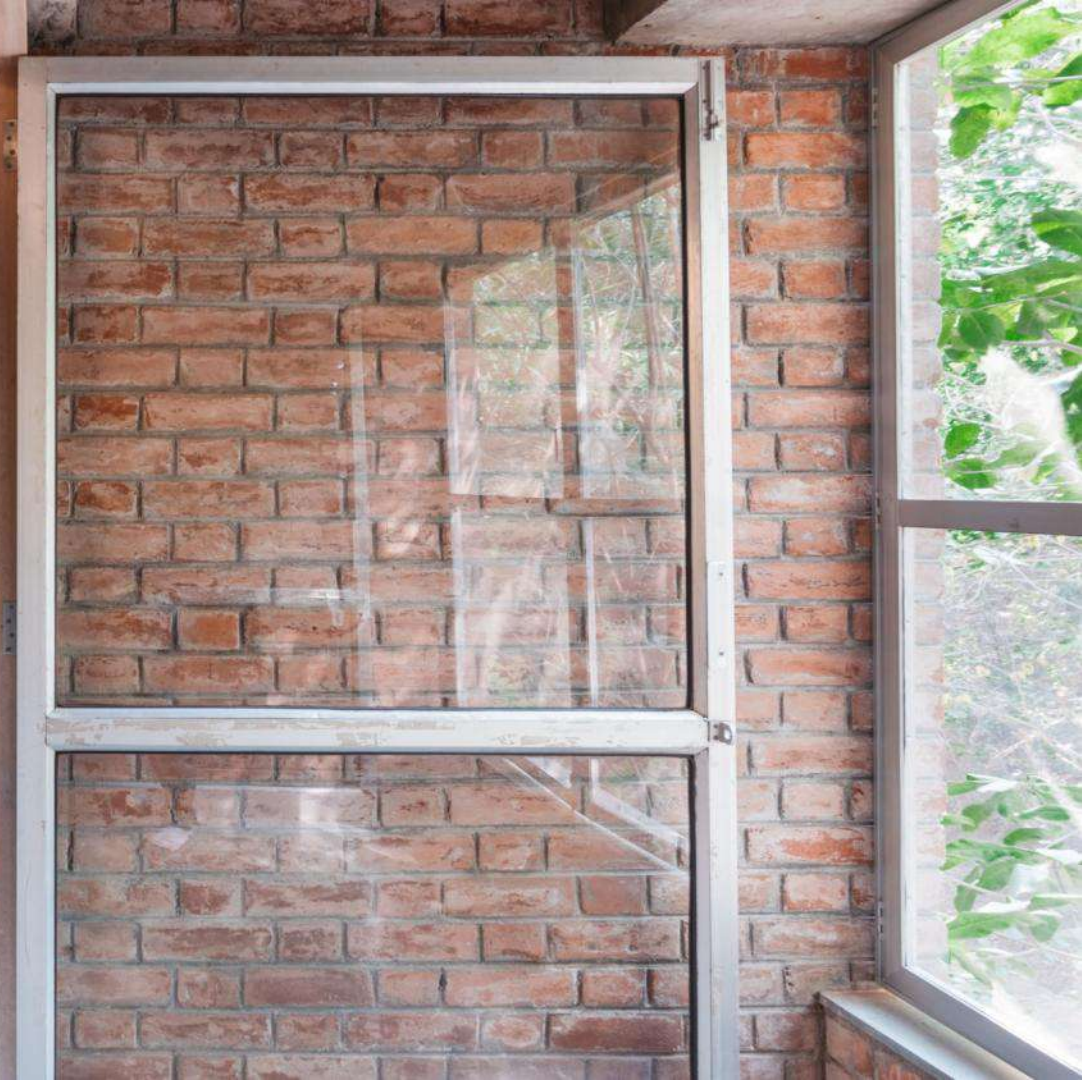
ELEVATION











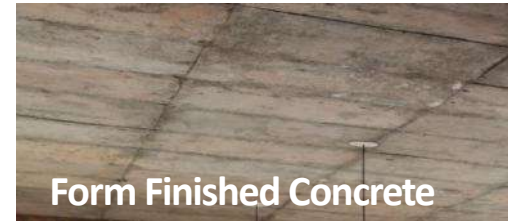


# 04

## INTEGRITY

## Honest Expressions of Materials

- Materials left Uncovered to express their natural character
- Use of Locally available materials
- Salvaged Materials like Steel and Pavement Blocks are used wisely
- Use of Low-VOC materials





## Reduce, Reuse, Recycle



The project reduces the resource consumption by using discarded Paver blocks for pathways and using reinforcement steel waste for railings and grills & railings













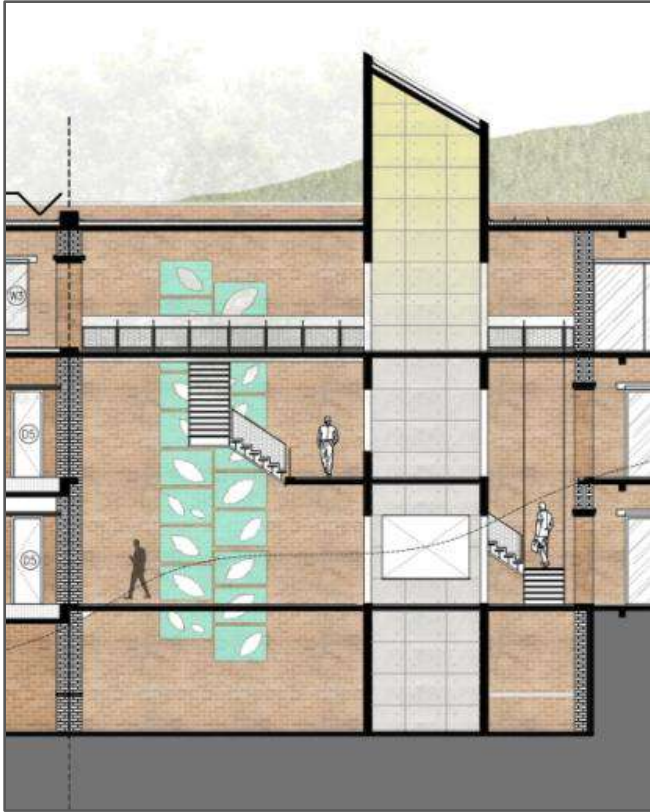
Phòng ngủ đơn  
Giá phòng: 150.000  
Phòng ngủ đôi  
Giá phòng: 250.000



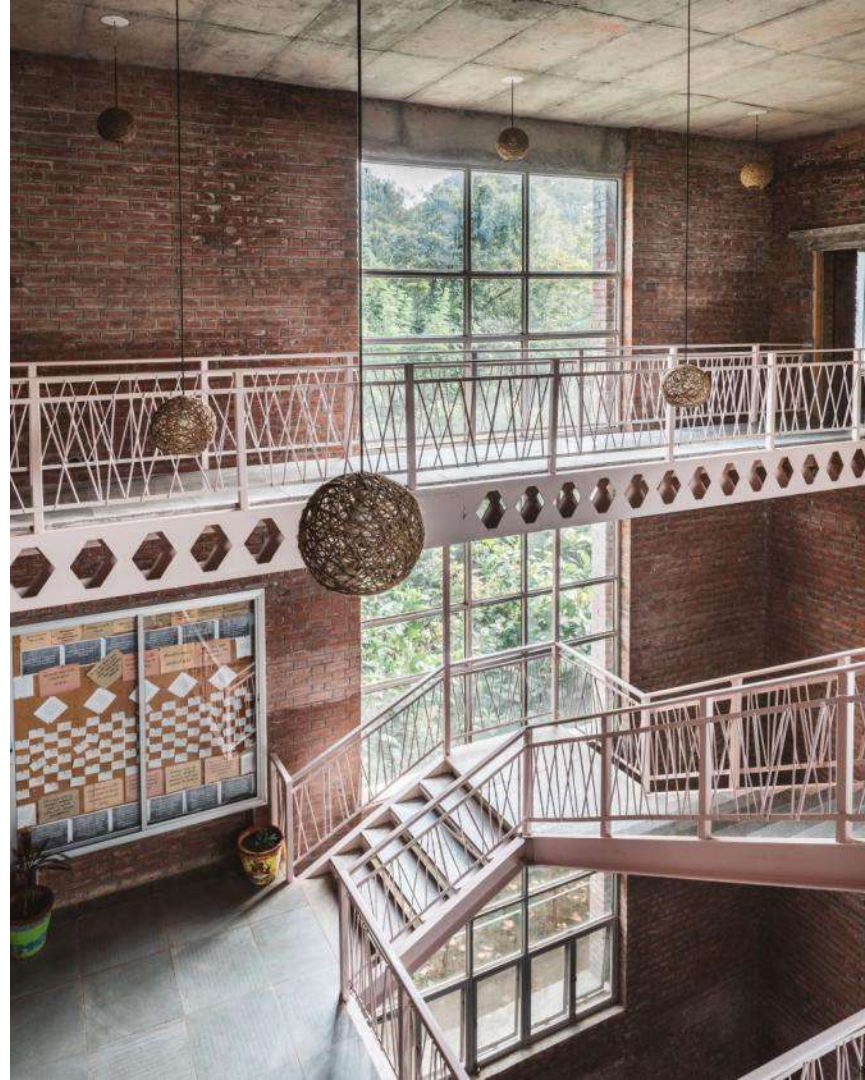
# 05 FREEDOM

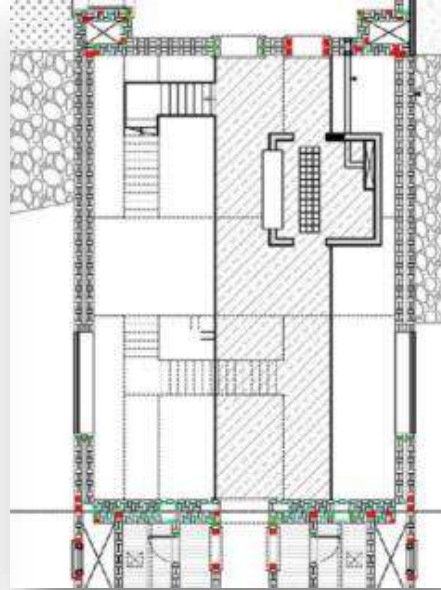
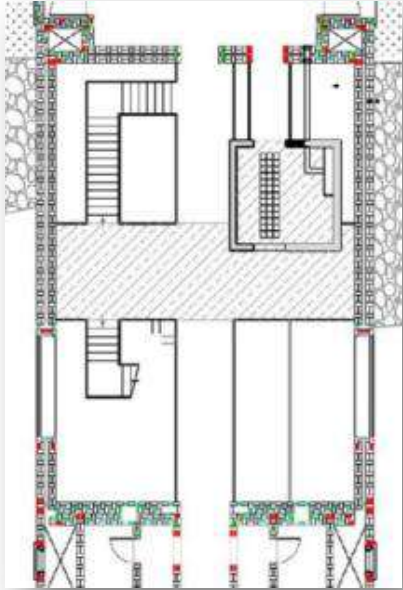






SECTION – THE HEART

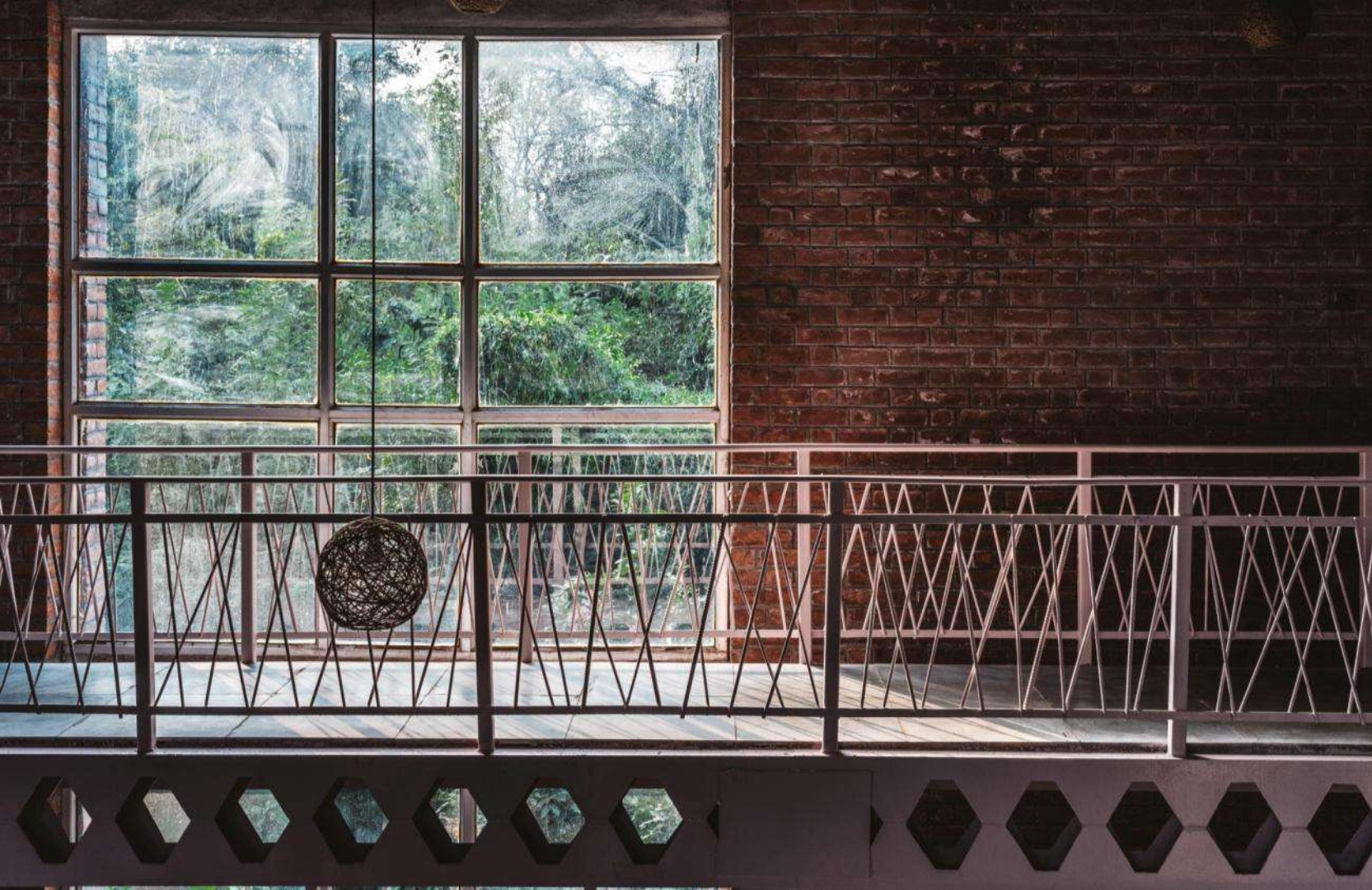




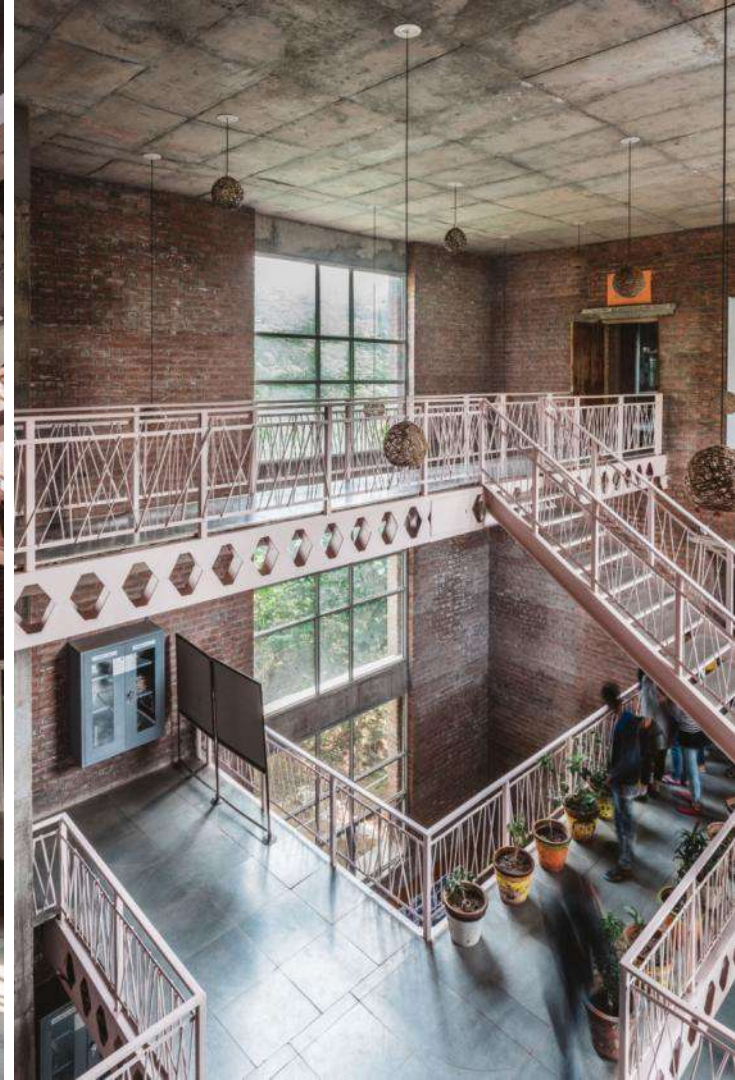
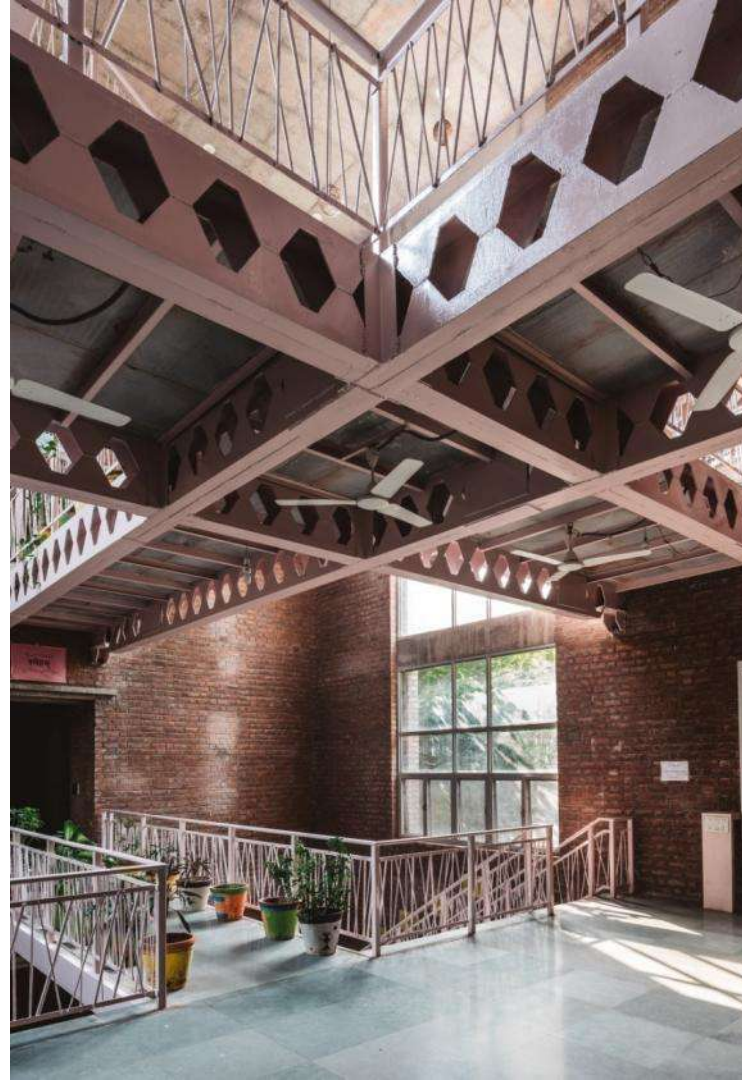
FLOOR PLANS OF **THE HEART**



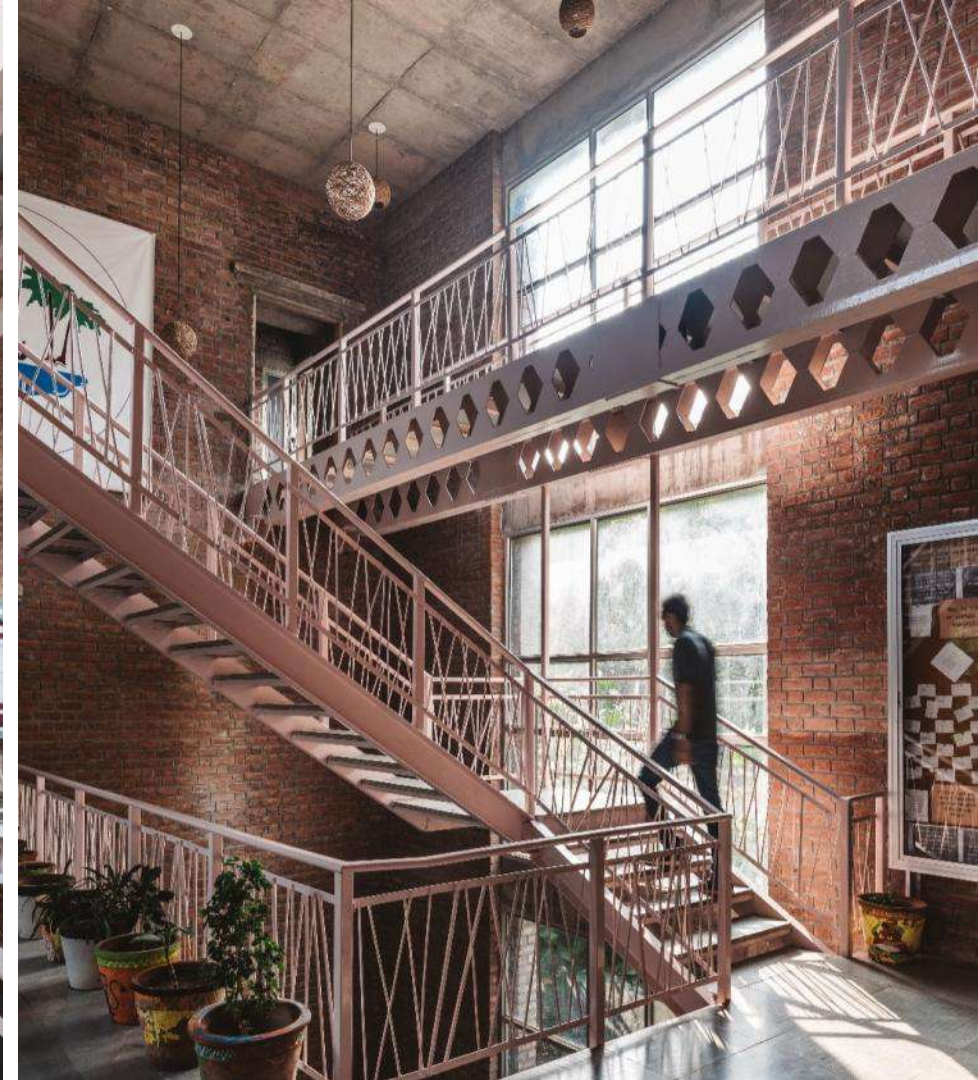
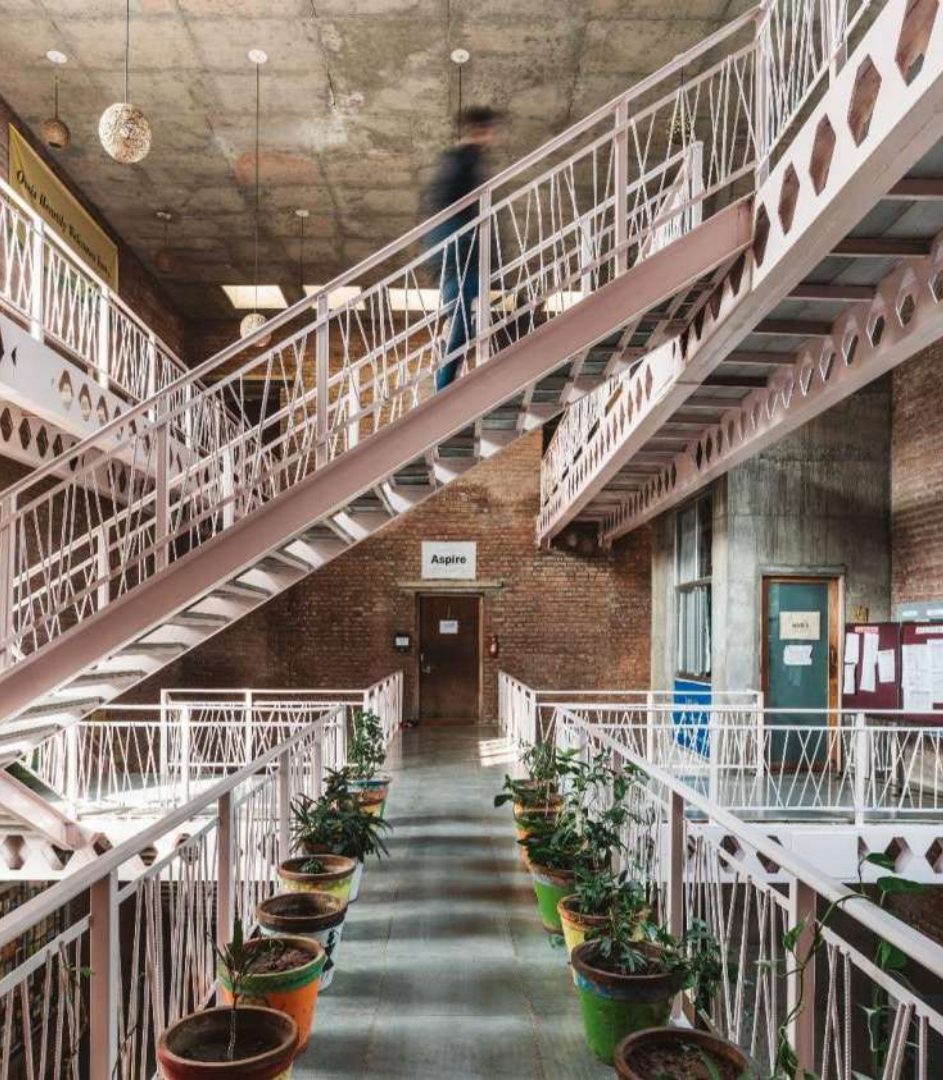






























Thank You!